

# Establishing the potential influence of beaver activity on the functioning of rivers and streams and water resource management in Scotland

## Appendices





# Establishing the potential influence of beaver activity on the functioning of rivers and streams and water resource management in Scotland

## Appendices

Josie Geris, Katya Dimitrova-Petrova, Mark Wilkinson



**Published by CREW** – Scotland’s Centre of Expertise for Waters. CREW connects research and policy, delivering objective and robust research and expert opinion to support the development and implementation of water policy in Scotland. CREW is a partnership between the James Hutton Institute and all Scottish Higher Education Institutes and Research Institutes supported by MASTS. The Centre is funded by the Scottish Government.

**Authors:** Josie Geris<sup>a</sup>, Katya Dimitrova-Petrova<sup>a</sup>, Mark Wilkinson<sup>b</sup>

<sup>a</sup>Northern Rivers Institute, School of Geosciences, University of Aberdeen

<sup>b</sup>The James Hutton Institute, Aberdeen

**Contributors/Collaborators:**

Stephen Addy, The James Hutton Institute, Aberdeen, United Kingdom

Richard Brazier, University of Exeter, United Kingdom

Angela Gurnell, Queen Mary University of London

Sara Fairbrother, University of Birmingham, United Kingdom

Annegret Larsen, University of Wageningen, Netherlands

Joshua Larsen, University of Birmingham, United Kingdom

Alan Law, University of Stirling, United Kingdom

Alan Puttock, University of Exeter, United Kingdom

Olly van Biervliet, University College London, United Kingdom

Cherie Westbrook, University of Saskatchewan, Canada

Nigel Willby, University of Stirling, United Kingdom

**Steering Group members:**

Sophie Beier, Scotland’s Centre of Expertise for Waters (CREW)

Doreen Bell, Scottish Water

Heather Forbes, Scottish Environment Protection Agency

Martin Gaywood, NatureScot

Jared Stewart, Scottish Water

Angus Tree, NatureScot

**Project Manager:** Sophie Beier

**Please reference this report as follows:** J. Geris, K. Dimitrova-Petrova, M. Wilkinson. Establishing the potential influence of beaver activity on the functioning of rivers and streams and water resource management in Scotland Scotland's. CD2020\_02. Centre of Expertise for Waters (CREW). Available online at: [crew.ac.uk/publications](http://crew.ac.uk/publications).

**ISBN number:** 978-0-902701-92-2

**Dissemination status:** Unrestricted

**Copyright:** All rights reserved. No part of this publication may be reproduced, modified or stored in a retrieval system without the prior written permission of CREW management. While every effort is made to ensure that the information given here is accurate, no legal responsibility is accepted for any errors, omissions or misleading statements. All statements, views and opinions expressed in this paper are attributable to the author(s) who contribute to the activities of CREW and do not necessarily represent those of the host institutions or funders.

**Cover photos:** Left and top right photos courtesy of Katya Dimitrova-Petrova. Middle photo courtesy of Josie Geris.

# Contents

Appendix 1: Literature search terms	1
Appendix 2: Evidence table (literature review)	2
Appendix 3: Distribution of selected aspects for individual metrics	8
Appendix 4: Overview of the effects of beaver activity on geomorphology, water quantity, water quality in Scotland	13
Appendix 5: Establishing levels of confidence in trend	16
Appendix 6: CREW Scottish Beaver Workshop	18
Appendix 7: Magnitude of change for selected metrics	20

# Appendix 1: Literature search terms

**Table A1. Terms used in the literature search in Google scholar and Web of Science to build the evidence base for this report.**

Metrics group	Search terms
Geomorphology	total dissolved solids
	suspended sediment
	total suspended solids
	sedimentation rate
	sediment accumulation
	sediment deposit
	channel sinuosity
	sinuosity
	channel geomorphology
	lateral connectivity
Water quantity	lateral flow
	wetland creation
	water quantity
	discharge
	peak discharge
	runoff
	flood
	water storage
	water retention
	groundwater recharge
Water quality	hyporheic zone
	hydromorphological alteration
	water chemistry
	phosphorus
	phosphate
	nitrogen
	nitrite
	nitrate
	ammonium
	carbon
total organic carbon	
dissolved organic carbon	
organic matter	
DOC	

## Appendix 2: Evidence table (literature review)

A2.1. Evidence table database is available upon request. The database shows an overview of the information captured of each study presenting quantifiable evidence (see full reference list in A2.2.), on effect of beaver activity, on one of the 3 groups of metrics. Key aspects of each study, as well as an indicator of which metric is provided by the study, are recorded using a code (provided within the database). Please note that some studies may provide quantifiable information on more than one metric.

### A2.2. Reference list – Evidence table

- Andersen DC, Shafroth PB, Pritekel CM, O'Neill MW (2011) Managed flood effects on beaver pond habitat in a desert riverine ecosystem, Bill Williams river, Arizona USA. *Wetlands* 31:195–206. doi: 10.1007/s13157-011-0154-y.
- Bashinskiy IV (2021) Beaver impact on water coverage of forest-steppe territories (Penza Region, European Russia). *Nature Conservation Research* 6:88–97. doi: 10.24189/ncr.2021.016.
- Bashinskiy IV, Osipov VV (2019) Sedimentation rate of suspended matter and its chemical composition in beaver water bodies in the state nature reserve «privolzhskaya lesostep'» (European Russia). *Nature Conservation Research* 4:54–66. doi: 10.24189/ncr.2019.046.
- Bason CW, Kroes DE (2017) The effect of beaver ponds on water quality in rural coastal plain streams. *Southeastern Naturalist* 16:584–602. doi: 10.1656/058.016.0408.
- Beechie TJ, Pollock MM, Baker S (2008) Channel incision, evolution and potential recovery in the Walla Walla and Tucannon River basins, northwestern USA. *Earth Surface Processes and Landforms* 33:784–800. doi: 10.1002/esp.1578.
- Beedle D (1992) Physical Dimensions and Hydrologic Effects of Beaver Ponds on Kuiu Island. 94.
- Bigler W, Butler DR, Dixon RW (2001) Beaver-pond sequence morphology and sedimentation in Northwestern Montana. *Physical Geography* 22:531–540. doi: 10.1080/02723646.2001.10642758.
- Błądzki LA, Bubier JL, Moulton LA, Kyker-Snowman TD (2011) Downstream effects of beaver ponds on the water quality of New England first- and second-order streams. *Ecology* 4:698–707. doi: 10.1002/eco.163.
- Bouwes N, Weber N, Jordan CE, *et al.*, (2016) Ecosystem experiment reveals benefits of natural and simulated beaver dams to a threatened population of steelhead (*Oncorhynchus mykiss*). *Scientific Reports* 6:28581. doi: 10.1038/srep28581.
- Briggs MA, Lautz LK, Hare DK, González-Pinzón R (2013) Relating hyporheic fluxes, residence times, and redox-sensitive biogeochemical processes upstream of beaver dams. *Freshwater Science* 32:622–641. doi: 10.1899/12-110.1.
- Briggs MA, Wang C, Day-Lewis FD, *et al.*, (2019) Return flows from beaver ponds enhance floodplain-to-river metals exchange in alluvial mountain catchments. *Science of the Total Environment* 685:357–369. doi: 10.1016/j.scitotenv.2019.05.371.
- Burchsted D, Daniels MD (2014) Classification of the alterations of beaver dams to headwater streams in northeastern Connecticut, U.S.A. *Geomorphology* 205:36–50. doi: 10.1016/j.geomorph.2012.12.029.
- Burns DA, McDonnell JJ (1998) Effects of a beaver pond on runoff processes: Comparison of two headwater catchments. *Journal of Hydrology* 205:248–264. doi: [https://doi.org/10.1016/S0022-1694\(98\)00081-X](https://doi.org/10.1016/S0022-1694(98)00081-X).
- Butler DR (2012) Characteristics of beaver ponds on deltas in a mountain environment. *Earth Surface Processes and Landforms* 37:876–882. doi: 10.1002/esp.3218.
- Butler DR, Malanson GP (1995) Sedimentation rates and patterns in beaver ponds in a mountain environment. *Geomorphology* 13:255–269. doi: 10.1016/0169-555X(95)00031-Y.
- Butler DR, Malanson GP (2005) The geomorphic influences of beaver dams and failures of beaver dams. *Geomorphology* 71:48–60. doi: 10.1016/j.geomorph.2004.08.016.
- Carter AM, Blaszcak JR, Heffernan JB, Bernhardt ES (2021) Hypoxia dynamics and spatial distribution in a low gradient river. *Limnology and Oceanography* Ino.11751. doi: 10.1002/Ino.11751.
- Chang H, Makido Y, Foster E (2021) Effects of land use change, wetland fragmentation, and best management practices on total suspended solids concentrations in an urbanizing Oregon watershed, USA. *Journal of Environmental Management* 282:111962. doi: 10.1016/j.jenvman.2021.111962.
- Cirmo CP, Driscoll CT (1993) Beaver pond biogeochemistry: Acid neutralizing capacity generation in a headwater wetland. *Wetlands* 13:277–292. doi: 10.1007/BF03161294.

- Čiuldiene D, Vigrīcas E, Belova O, *et al.*, (2020) The effect of beaver dams on organic carbon, nutrients and methyl mercury distribution in impounded waterbodies. *Wildlife Biology*. doi: 10.1111/wlb.00678.
- Correll DL, Jordan TE, Weller DE (2000) Beaver pond biogeochemical effects in the Maryland Coastal Plain. *Biogeochemistry* 49:217–239. doi: 10.1023/A.
- Cunningham JM, Calhoun AJK, Glanz WE (2016) Patterns of beaver colonization and wetland change in Acadia National Park. 13:583–596.
- de Visscher M, Nyssen J, Pontzele J, *et al.*, (2014) Spatio-temporal sedimentation patterns in beaver ponds along the Chevral river, Ardennes, Belgium. *Hydrological Processes* 28:1602–1615. doi: 10.1002/hyp.9702.
- Dee S, Korol A, Ahn C, *et al.*, (2018) Patterns of vegetation and soil properties in a beaver-created wetland located on the Coastal Plain of Virginia. *Landscape and Ecological Engineering* 14:209–219. doi: 10.1007/s11355-017-0342-x.
- Devito KJ, Dillon PJ (1993) Importance of runoff and winter anoxia to the P and N dynamics of a beaver pond. *Canadian Journal of Fisheries and Aquatic Sciences* 50:2222–2234. doi: 10.1139/f93-248.
- Dewey C, Bargar JR, Fendorf S (2021) Porewater lead concentrations limited by particulate organic matter coupled with ephemeral iron(III) and sulfide phases during redox cycles within contaminated floodplain soils. *Environmental Science & Technology* acs.est.0c08162. doi: 10.1021/acs.est.0c08162.
- Dove A, Roulet N, Crill P, *et al.*, (1999) Methane dynamics of a northern boreal beaver pond. *Écoscience* 6:577–586. doi: 10.1080/11956860.1999.11682548.
- Elmeros M, Bo Madsen A, Berthelsen Jørn Pagh (2003) Monitoring of reintroduced beavers (*Castor fiber*) in Denmark. *Lutra* 46:153–162.
- Fairfax E, Small EE (2018) Using remote sensing to assess the impact of beaver damming on riparian evapotranspiration in an arid landscape. *Ecohydrology* 11:e1993. doi: 10.1002/eco.1993.
- Fletcher DE, Lindell BE, Lindell AH, *et al.*, (2019) Basins, beaver ponds, and the storage and redistribution of trace elements in an industrially impacted coastal plain stream on the Savannah River Site, SC, USA. *Environment International* 133:105174. doi: 10.1016/j.envint.2019.105174.
- Fracz A, Chow-Fraser P (2013) Changes in water chemistry associated with beaver-impounded coastal marshes of eastern Georgian Bay. *Canadian Journal of Fisheries and Aquatic Sciences* 70:834–840. doi: 10.1139/cjfas-2012-0431.
- Fuller MR, Peckarsky BL (2011) Does the morphology of beaver ponds alter downstream ecosystems? *Hydrobiologia* 668:35–48. doi: 10.1007/s10750-011-0611-x.
- García VJ, Rodríguez PL (2018) Efecto del castor en el metabolismo del perifiton y en variables limnológicas de ríos y arroyos fueguinos. *Ecología Austral* 28:593–605. doi: 10.25260/ea.18.28.3.0.708.
- Gard R (1961) Effects of beaver on trout in Sagehen Creek, California. *The Journal of Wildlife Management* 25:221–242.
- Giriati D, Gorczyca E, Sobucki M (2016) Beaver ponds' impact on fluvial processes (Beskid Niski Mts., SE Poland). *Science of the Total Environment* 544:339–353. doi: 10.1016/j.scitotenv.2015.11.103.
- Gorczyca E, Krzemień K, Sobucki M, Jarzyna K (2018) Can beaver impact promote river renaturalization? The example of the Raba River, southern Poland. *Science of the Total Environment* 615:1048–1060. doi: 10.1016/j.scitotenv.2017.09.245.
- Green KC, Westbrook CJ (2009) Changes in riparian area structure, channel hydraulics, and sediment yield following loss of beaver dams. *BC Journal of Ecosystems and Management* 10:68–79.
- Grygoruk M, Nowak M (2014) Spatial and temporal variability of channel retention in a lowland temperate forest stream settled by European Beaver (*Castor fiber*). *Forests* 5:2276–2288. doi: 10.3390/f5092276.
- Hafen K (2017) To what extent might beaver dam building buffer water storage losses associated with a declining snowpack? Master of Science Thesis, Utah State University. <https://digitalcommons.usu.edu/etd/6503>.
- Hill AR, Duval TP (2009) Beaver dams along an agricultural stream in southern Ontario, Canada: their impact on riparian zone hydrology and nitrogen chemistry. *Hydrological Processes* 23:1324–1336. doi: <https://doi.org/10.1002/hyp.7249>.
- Hillman GR (1998) Flood wave attenuation by a wetland following a beaver dam failure on a second order boreal stream. *Wetlands* 18:21–34. doi: 10.1007/BF03161439.



- Hood GA, Bayley SE (2008) Beaver (*Castor canadensis*) mitigate the effects of climate on the area of open water in boreal wetlands in western Canada. *Biological Conservation* 141:556–567. doi: 10.1016/j.biocon.2007.12.003.
- Hood GA, Larson DG (2015) Ecological engineering and aquatic connectivity: a new perspective from beaver-modified wetlands. *Freshwater Biology* 60:198–208. doi: 10.1111/fwb.12487.
- Janzen K, Westbrook CJ (2011) Hyporheic flows along a channelled peatland: Influence of beaver dams. *Canadian Water Resources Journal* 36:331–347. doi: 10.4296/cwrj3604846.
- Jin L, Siegel DI, Lautz LK, Otz MH (2009) Transient storage and downstream solute transport in nested stream reaches affected by beaver dams. *Hydrological Processes* 23:2438–2449. doi: 10.1002/hyp.7359.
- Johnston CA (2014) Beaver pond effects on carbon storage in soils. *Geoderma* 213:371–378. doi: 10.1016/j.geoderma.2013.08.025.
- Johnston CA, Naiman RJ (1990) The use of a geographic information system to analyze long-term landscape alteration by beaver. 4:5–19.
- Jones K, White J, Smith C, *et al.*, (2018) Tualatin Beaver Poster 1. Overview of the Tualatin Urban Beaver Dam Study.
- Kalvīte Z, Lībiete Z, Kļaviņš I, *et al.*, (2021) The impact of beaver dam removal on the chemical properties of water in drainage ditches in peatland forests. *Scandinavian Journal of Forest Research* 36:1–14. doi: 10.1080/02827581.2020.1855364.
- Kaplan DI, Smith R, Parker CJ, *et al.*, (2020) Uranium attenuated by a wetland 50 years after release into a stream. *ACS Earth and Space Chemistry* 4:1360–1366. doi: 10.1021/acsearthspacechem.0c00124.
- Karran D, Westbrook C, Wheaton J, *et al.*, (2016) Rapid surface water volume estimations in beaver ponds. *Hydrology and Earth System Sciences Discussions* 1–26. doi: 10.5194/hess-2016-352,2016.
- Karran DJ, Westbrook CJ, Bedard-Haughn A (2018) Beaver-mediated water table dynamics in a Rocky Mountain fen. *Ecohydrology* 11:1–11. doi: 10.1002/eco.1923.
- Katsman EA, Suzdaleva AL, Osipov V V., Bashinskiy I V. (2020) Concentrations of biogenic compounds in forest-steppe water bodies and streams inhabited by beavers (*Castor fiber* L.). *Russian Journal of Biological Invasions* 11:31–40. doi: 10.1134/S2075111720010063.
- Klimenko DE, Eponchintseva DN (2015) Experimental hydrological studies of processes of failure of beaver dams and pond draining. *Biology Bulletin* 42:882–890. doi: 10.1134/S1062359015100064.
- Klotz RL (1998) Influence of beaver ponds on the phosphorus concentration of stream water. *Canadian Journal of Fisheries and Aquatic Sciences* 55:1228–1235. doi: 10.1139/f97-318.
- Klotz RL (2010) Reduction of High Nitrate Concentrations in a Central New York State Stream Impounded by Beaver. *Northeastern Naturalist* 17:349–356. doi: 10.1656/045.017.0301.
- Laurel D, Wohl E (2019) The persistence of beaver-induced geomorphic heterogeneity and organic carbon stock in river corridors. *Earth Surface Processes and Landforms* 44:342–353. doi: 10.1002/esp.4486.
- Law A, McLean F, Willby NJ (2016) Habitat engineering by beaver benefits aquatic biodiversity and ecosystem processes in agricultural streams. *Freshwater Biology* 61:486–499. doi: 10.1111/fwb.12721.
- Lazar JG, Addy K, Gold AJ, *et al.*, (2015) Beaver ponds: resurgent nitrogen sinks for rural watersheds in the Northeastern United States. *Journal of Environmental Quality* 44:1684–1693. doi: 10.2134/jeq2014.12.0540.
- Levanoni O, Bishop K, Mckie BG, *et al.*, (2015) Impact of beaver pond colonization history on methylmercury concentrations in surface water. *Environmental Science and Technology* 49:12679–12687. doi: 10.1021/acs.est.5b03146.
- Levine R, Meyer GA (2014) Beaver dams and channel sediment dynamics on Odell Creek, Centennial Valley, Montana, USA. *Geomorphology* 205:51–64. doi: 10.1016/j.geomorph.2013.04.035.
- Liao Q, Boucher R, Wu C, *et al.*, (2020) Hydrological Impact of Beaver Habitat Restoration in the Milwaukee River Watershed. <https://www.beaverinstitute.org/wp-content/uploads/2021/03/Beaver-Hydrology-impact-in-Milwaukee-final-1.pdf> [Accessed September 2021].
- Little AM, Guntenspergen GR, Allen TFH (2012) Wetland vegetation dynamics in response to beaver (*Castor canadensis*) activity at multiple scales. *Ecoscience* 19:246–257. doi: 10.2980/19-3-3498.
- Lizarralde MS, Defarrari GA, Alvarez SE, Escobar JM (1996) Effects of beaver (*Castor canadensis*) on the nutrient dynamics of the southern beech forest of Tierra del Fuego (Argentina). *Ecologia Austral* 6:101–105.

- Lowry MMMM (1993) Groundwater elevations and temperature adjacent to a beaver pond in central Oregon. Ir.Library.Oregonstate.Edu no: 226, p 219.
- Majerova M, Neilson BT, Roper BB (2020) Beaver dam influences on streamflow hydraulic properties and thermal regimes. *Science of the Total Environment* 718:134853. doi: 10.1016/j.scitotenv.2019.134853.
- Maret TJ, Parker M, Fannin TE (1987) The effect of beaver ponds on the nonpoint source water quality of a stream in Southwestern Wyoming. *Water Research* 21:263–268. doi: 10.1016/0043-1354(87)90204-1.
- Margolis BE, Castro MS, Raesly RL (2001) The impact of beaver impoundments on the water chemistry of two Appalachian streams. *Canadian Journal of Fisheries and Aquatic Sciences* 58:2271–2283. doi: 10.1139/f01-166.
- McCreesh RK, Fox-Dobbs K, Wimberger P, *et al.*, (2019) Reintroduced beavers rapidly influence the storage and biogeochemistry of sediments in headwater Streams (Methow River, Washington). *Northwest Science* 93:112. doi: 10.3955/046.093.0203.
- Meentemeyer RK, Butler DR (1999) Hydrogeomorphic effects of beaver dams in glacier national park, Montana. *Physical Geography* 20:436–446. doi: 10.1080/02723646.1999.10642688.
- Minke M, Freibauer A, Yarmashuk T, *et al.*, (2020) Flooding of an abandoned fen by beaver led to highly variable greenhouse gas emissions. *Mires and Peat* 26:1–24. doi: 10.19189/MaP.2019.SNPG.StA.1808.
- Moosavi SC, Crill PM (1997) Controls on CH<sub>4</sub> and CO<sub>2</sub> emissions along two moisture gradients in the Canadian boreal zone. *Journal of Geophysical Research: Atmospheres* 102:29261–29277. doi: 10.1029/96JD03873.
- Morrison A, Westbrook CJ, Bedard-Haughn A (2015) Distribution of Canadian Rocky Mountain wetlands impacted by beaver. *Wetlands* 35:95–104. doi: 10.1007/s13157-014-0595-1.
- Munir TM, Westbrook CJ (2021) Beaver dam analogue configurations influence stream and riparian water table dynamics of a degraded spring-fed creek in the Canadian Rockies. *River Research and Applications* 37:330–342. doi: 10.1002/rra.3753.
- Murray D, Neilson BT, Brahney J (2021) Source or sink? Quantifying beaver pond influence on non-point source pollutant transport in the Intermountain West. *Journal of Environmental Management* 285:112127. doi: 10.1016/j.jenvman.2021.112127.
- Muskopf SA (2007) The effect of beaver (*Castor canadensis*) dam removal on total phosphorus concentration in Taylor Creek and wetland, South Lake Tahoe, California. Humboldt State University.
- Naiman R, Manning T, Johnston C (1991) Beaver population fluctuations and tropospheric methane emissions in boreal wetlands. *Biogeochemistry* 12:1–15. doi: 10.1007/BF00002623.
- Naiman RJ., Melillo JM., Hobbie JE. (1986) Ecosystem alteration of boreal forest streams by beaver (*Castor canadensis*). *Ecology* 67:1254–1269. doi: <https://doi.org/10.2307/1938681>.
- Naiman RJ, Melillo JM (1984) Nitrogen budget of a subarctic stream altered by beaver (*Castor canadensis*). *Oecologia* 62:150–155. doi: 10.1007/BF00379007.
- Naiman RJ, Pinay G, Johnston CA, Pastor J (1994) Beaver influences on the long-term biogeochemical characteristics of boreal forest drainage networks. *Ecology* 75:905–921. doi: 10.2307/1939415.
- Neumayer M, Teschemacher S, Schloemer S, *et al.*, (2020) Hydraulic modeling of beaver dams and evaluation of their impacts on flood events. *Water (Switzerland)* 12:1–23. doi: 10.3390/w12010300.
- Nummi P, Vehkaoja M, Pumpanen J, Ojala A (2018) Beavers affect carbon biogeochemistry: both short-term and long-term processes are involved. *Mammal Review* 48:298–311. doi: 10.1111/mam.12134.
- Nyssen J, Pontzele J, Billi P (2011) Effect of beaver dams on the hydrology of small mountain streams: Example from the Chevril in the Ourthe Orientale basin, Ardennes, Belgium. *Journal of Hydrology* 402:92–102. doi: 10.1016/j.jhydrol.2011.03.008.
- Orr MR, Weber NP, Noone WN, *et al.*, (2020) Short-term stream and riparian responses to beaver dam analogs on a low-gradient channel lacking woody riparian vegetation. *Northwest Science* 93:171–184. doi: 10.3955/046.093.0302.
- Otyukova NG (2009) Some aspects of the hydrochemical regime of a small river under the conditions of zoogenic disturbance. *Water Resources* 36:604–609. doi: 10.1134/S0097807809050133.
- Pęczyła W, Szczurowska A (2013) Long-term changes in phytoplankton in a humic lake in response to the water level rising: The effects of beaver engineering on a freshwater ecosystem. *Knowledge and Management of Aquatic Ecosystems* 1–13. doi: 10.1051/kmae/2013061.

- Pollock MM, Beechie TJ, Jordan CE (2007) Geomorphic changes upstream of beaver dams in Bridge Creek, an incised stream channel in the interior Columbia River basin, eastern Oregon. *Earth Surface Processes and Landforms* 32:1174–1185. doi: 10.1002/esp.1553.
- Puttock A, Graham HA, Ashe J, *et al.*, (2021) Beaver dams attenuate flow: A multi-site study. *Hydrological Processes* 35:1–18. doi: 10.1002/hyp.14017.
- Puttock A, Graham HA, Carless D, Brazier RE (2018) Sediment and nutrient storage in a beaver engineered wetland. *Earth Surface Processes and Landforms* 43:2358–2370. doi: 10.1002/esp.4398.
- Puttock A, Graham HA, Cunliffe AM, *et al.*, (2017) Eurasian beaver activity increases water storage, attenuates flow and mitigates diffuse pollution from intensively-managed grasslands. *Science of the Total Environment* 576:430–443. doi: 10.1016/j.scitotenv.2016.10.122.
- Robertson DM, Rose WJ, Reneau PC (2016) Interannual and long-term changes in the trophic state of a multibasin lake: effects of morphology, climate, winter aeration, and beaver activity. *Canadian Journal of Fisheries and Aquatic Sciences* 73:445–460. doi: 10.1139/cjfas-2015-0249.
- Robinson CT, Schweizer P, Larsen A, *et al.*, (2020) Beaver effects on macroinvertebrate assemblages in two streams with contrasting morphology. *Science of The Total Environment* 722:137899. doi: 10.1016/j.scitotenv.2020.137899.
- Rodríguez P, González Garraza G, García V, *et al.*, (2020) Beaver dam effect on phytoplankton and periphyton composition and hydrology in streams from Tierra del Fuego (Argentina). *Hydrobiologia* 847:1461–1477. doi: 10.1007/s10750-020-04201-5.
- Roulet NT, Ash R, Moore TR (1992) Low boreal wetlands as a source of atmospheric methane. *Journal of Geophysical Research* 97:3739. doi: 10.1029/91JD03109.
- Ruedemann R., Schoonmaker WJ (1938) Beaver dams as geologic agents. *Science* 88:523–525.
- Scamardo J, Wohl E (2020) Sediment storage and shallow groundwater response to beaver dam analogues in the Colorado Front Range, USA. *River Research and Applications* 36:398–409. doi: 10.1002/rra.3592.
- Shepherd NL, Nairn RW (2020) Metals retention in a net alkaline mine drainage impacted stream due to the colonization of the North American Beaver (*Castor canadensis*). *Science of the Total Environment* 731:139203. doi: 10.1016/j.scitotenv.2020.139203.
- Short LE, Gabet EJ, Hoffman DF (2015) The role of large woody debris in modulating the dispersal of a post-fire sediment pulse. *Geomorphology* 246:351–358. doi: 10.1016/j.geomorph.2015.06.031.
- Smith A, Tetzlaff D, Gelbrecht J, *et al.*, (2020) Riparian wetland rehabilitation and beaver re-colonization impacts on hydrological processes and water quality in a lowland agricultural catchment. *Science of the Total Environment* 699:134302. doi: 10.1016/j.scitotenv.2019.134302.
- Smith C, Poor E, Rounds S, Jones K (2018) Tualatin Beaver Poster 4 - Preliminary results of the effects of beaver activity on water quality in Fanno Creek at Greenway Park.
- Stefan J, Klein A (2004) Hydrogeomorphic effects of beaver dams on floodplain morphology: Avulsion processes and sediment fluxes in upland valley floors (Spessart, Germany). *Quaternaire* 15:219–231. doi: 10.3406/quate.2004.1769.
- Syphard AD, Garcia MW (2001) Human- and beaver-induced wetland changes in the Chickahominy river watershed from 1953 to 1994. *Wetlands* 21:342–353. doi: [https://doi.org/10.1672/0277-5212\(2001\)021\[0342:HABIWC\]2.0.CO;2](https://doi.org/10.1672/0277-5212(2001)021[0342:HABIWC]2.0.CO;2).
- Triska FJ, Jackman AP, Duff JH, Avanzino RJ (2000) Subchannel flow velocity and dispersion beneath a relict beaver dam, Shingobee River, Minnesota, USA: implications for nutrient cycling. *SIL Proceedings, 1922-2010* 27:463–467. doi: 10.1080/03680770.1998.11901274.
- van Biervliet O, Thompson J, Bennion B, *et al.*, The effects of the Eurasian beaver (*Castor fiber*) on hydrology in a UK headwater stream.
- Vecherskiy M V., Korotaeva V V., Kostina N V., *et al.*, (2011) Biological activities of “beaver landscape” soils. *Moscow University Soil Science Bulletin* 66:175–179. doi: 10.3103/s0147687411040089.
- Vehkaoja M, Nummi P, Rask M, *et al.*, (2015) Spatiotemporal dynamics of boreal landscapes with ecosystem engineers: beavers influence the biogeochemistry of small lakes. *Biogeochemistry* 124:405–415. doi: 10.1007/s10533-015-0105-4.
- Weber N, Bouwes N, Pollock MM, *et al.*, (2017) Alteration of stream temperature by natural and artificial beaver dams. *PLoS ONE* 12:1–11. doi: 10.1371/journal.pone.0176313.
- Wegener P, Covino T, Wohl E (2017) Beaver-mediated lateral hydrologic connectivity, fluvial carbon and nutrient flux, and aquatic ecosystem metabolism. *Water Resources Research* 53:4606–4623. doi: 10.1002/2016WR019790.

- Westbrook CJ, Cooper DJ, Baker BW (2011) Beaver assisted river valley formation. *River Research and Applications* 27:247–256. doi: 10.1002/rra.1359.
- Westbrook CJ, Cooper DJ, Baker BW (2006) Beaver dams and overbank floods influence groundwater-surface water interactions of a Rocky Mountain riparian area. *Water Resources Research* 42:1–12. doi: 10.1029/2005WR004560.
- Westbrook CJ, Ronnquist A, Bedard-Haughn A (2020) Hydrological functioning of a beaver dam sequence and regional dam persistence during an extreme rainstorm. *Hydrological Processes* 34:3726–3737. doi: 10.1002/hyp.13828.
- Weyhenmeyer CE (1999) Methane emissions from beaver ponds: Rates, patterns, and transport mechanisms. *Global Biogeochemical Cycles* 13:1079–1090.
- White J, Smith C, Poor E, *et al.*, (2018) Tualatin Beaver Poster 2 - Preliminary results of a beaver dam inventory and beaver dam capacity estimates in the Tualatin River basin.
- Willby N, Perfect C, Law A (2014) The Scottish Beaver Trial : Monitoring of aquatic vegetation and associated features of the Knapdale lochs 2008-2013 , final report. Scottish Natural Heritage Commissioned Report 1–127.
- Willby NJ, Law A, Levanoni O, *et al.*, (2018) Rewilding wetlands: Beaver as agents of within-habitat heterogeneity and the responses of contrasting biota. *Philosophical Transactions of the Royal Society B: Biological Sciences* 373:1–8. doi: 10.1098/rstb.2017.0444.
- Wohl E (2013) Landscape-scale carbon storage associated with beaver dams. *Geophysical Research Letters* 40:3631–3636. doi: 10.1002/grl.50710.
- Wohl E, Dwire K, Sutfin N, *et al.*, (2012) Mechanisms of carbon storage in mountainous headwater rivers. 1–8. doi: 10.1038/ncomms2274.
- Woo M, Waddington JM (1990) Effects of Beaver Dams on Subarctic Wetland Hydrology. Published by: Arctic Institute of North America. <https://www.jstor.org/stable/40511261> Effects of Beaver Dams on Subarctic Wetland Hydrol. 43:223–230.
- Yavitt JB, Lang GE, Sextstone AJ (1990) Methane fluxes in wetland and forest soils, beaver ponds, and low-order streams of a temperate forest ecosystem. *Journal of Geophysical Research* 95:22463. doi: 10.1029/JD095iD13p22463.
- Zaidel PA, Roy AH, Houle KM, *et al.*, (2021) Impacts of small dams on stream temperature. *Ecological Indicators* 120:106878. doi: 10.1016/j.ecolind.2020.106878.
- Zięba D, Wachniew P (2021) Phosphorus transport in a lowland stream derived from a tracer test with <sup>32</sup>P. *Water* 13:1030. doi: 10.3390/w13081030.

# Appendix 3: Distribution of selected aspects for individual metrics

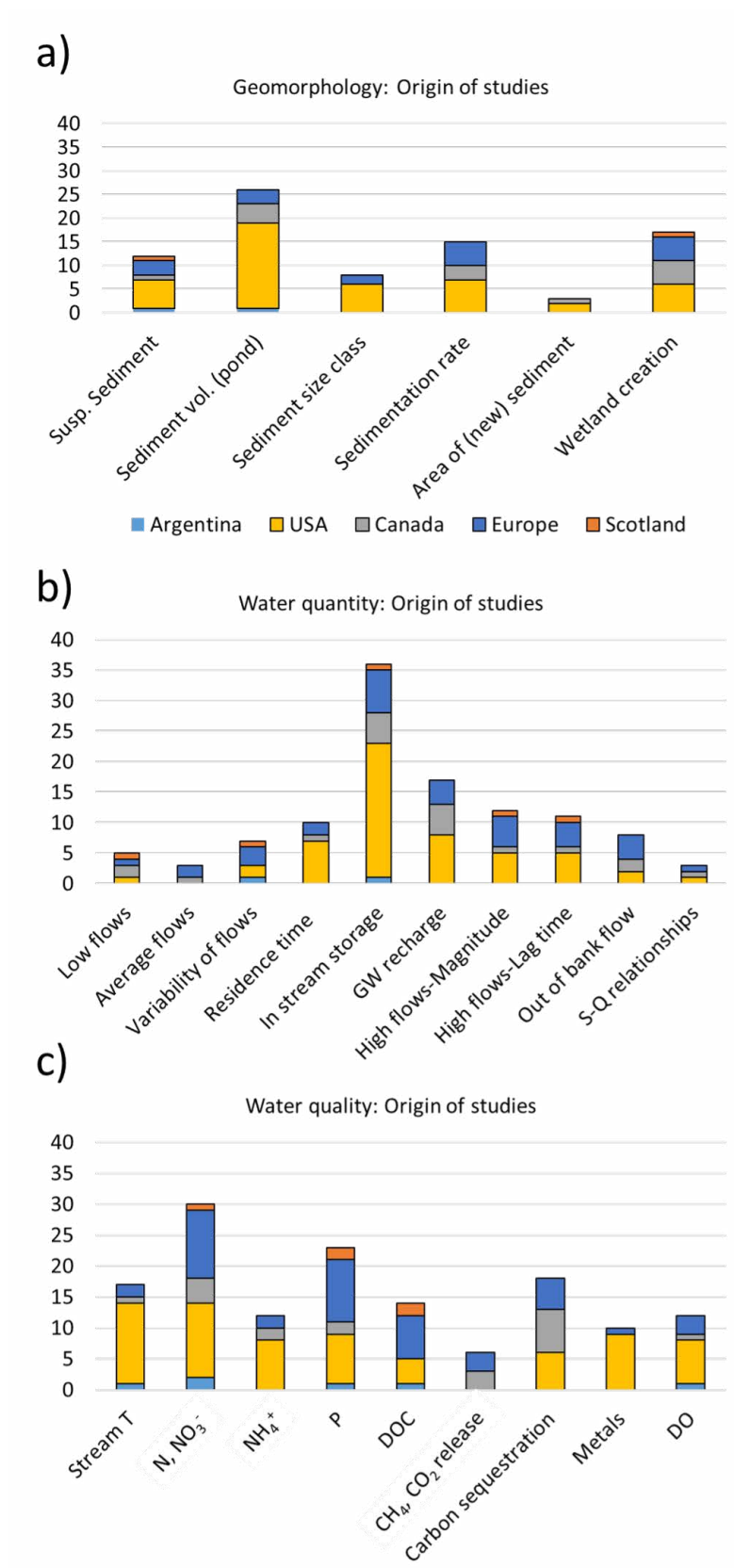


Figure A3.1. Distribution of aspect origin of studies for individual metrics. a) Geomorphology metrics, b) Water quantity, c) Water quality.



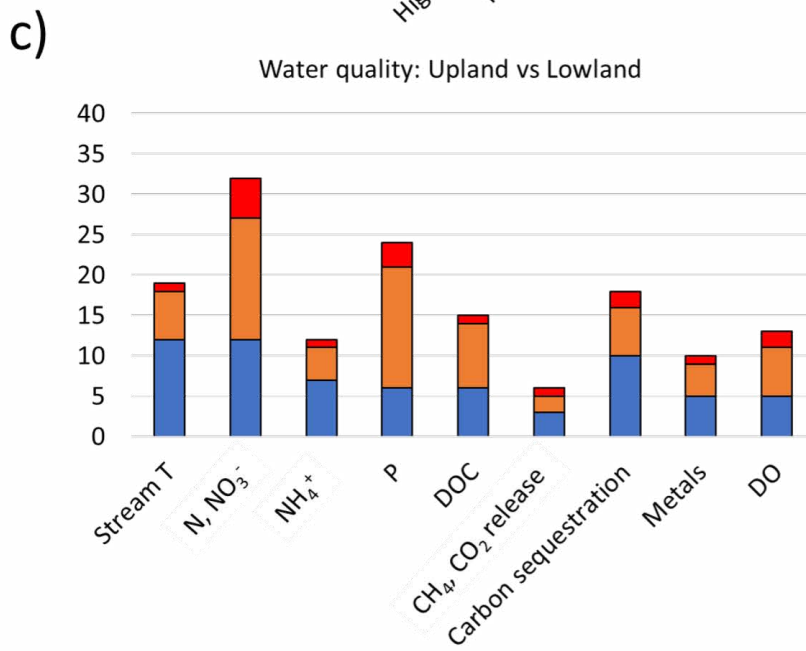
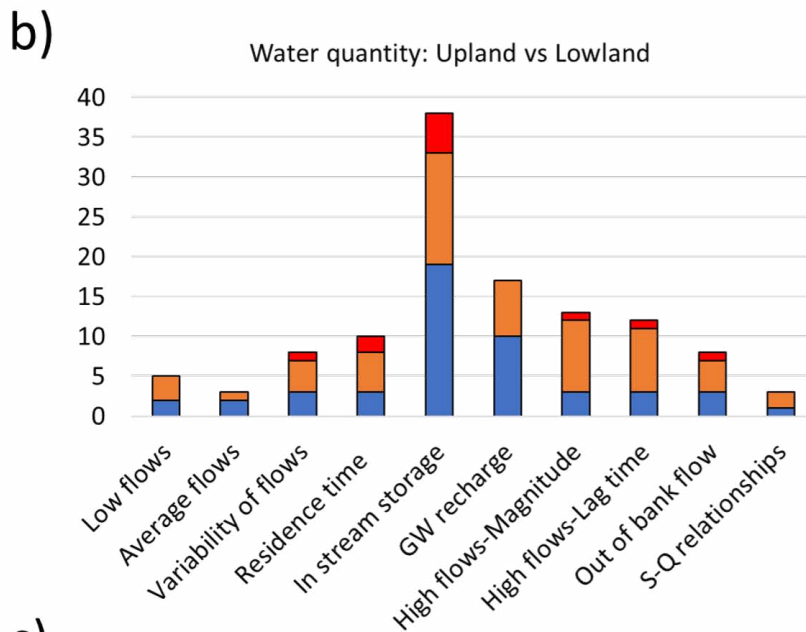
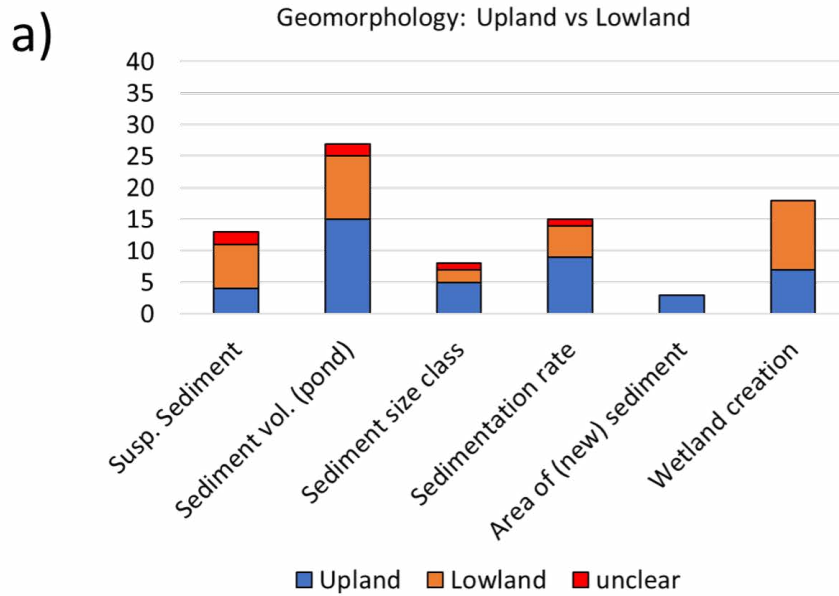


Figure A3.2. Distribution of aspect upland or lowland for individual metrics. a) Geomorphology metrics, b) Water quantity, c) Water quality.

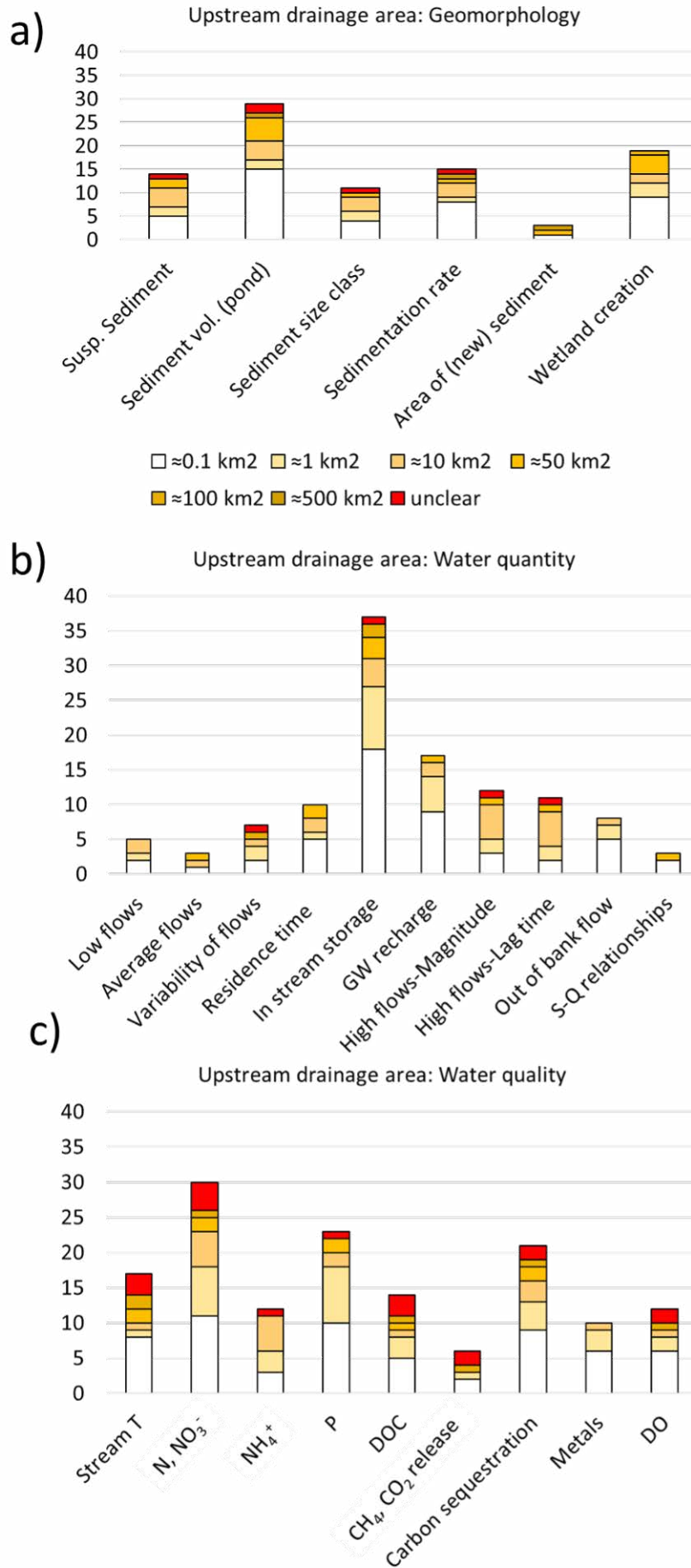
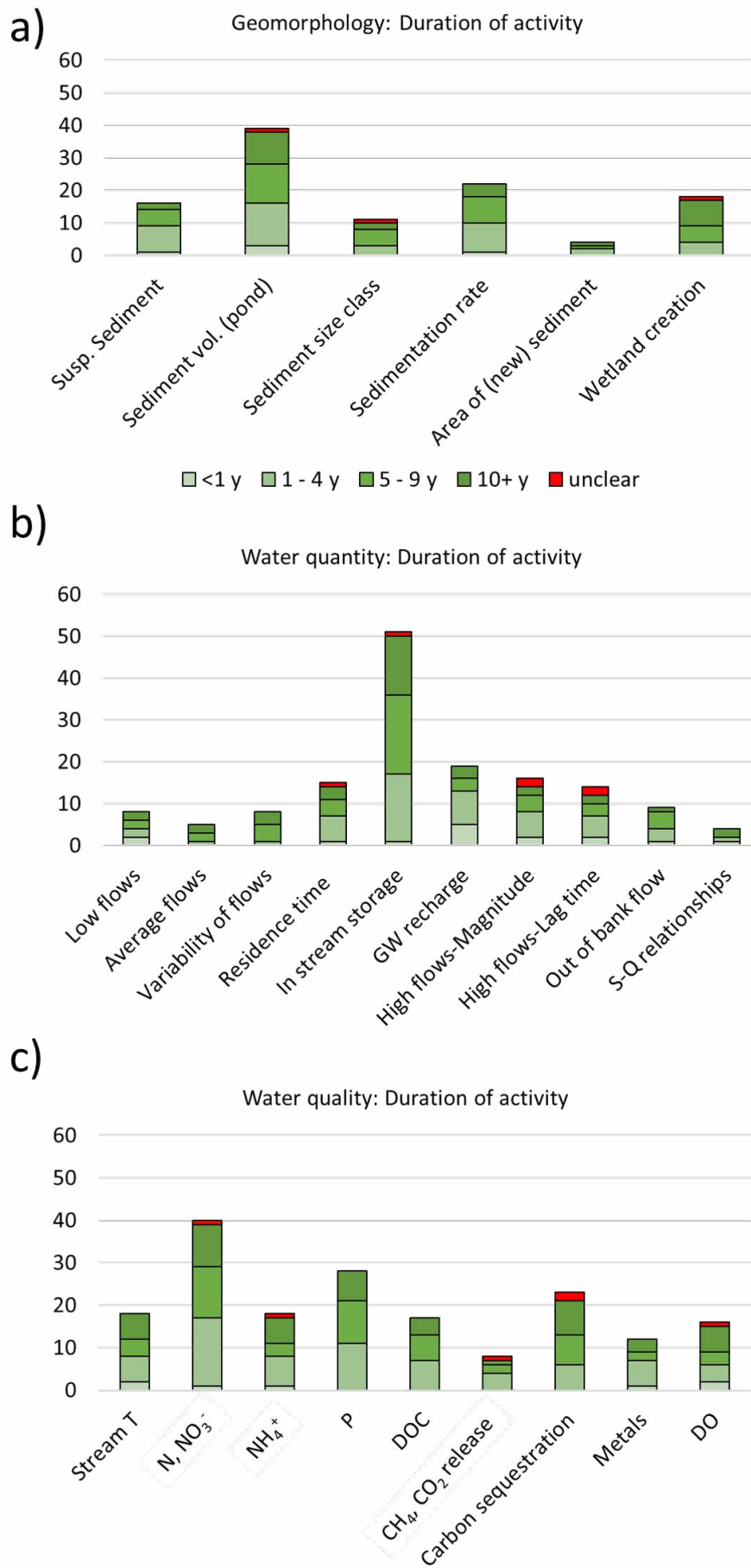


Figure A3.3. Distribution of aspect upstream drainage area for individual metrics. a) Geomorphology metrics, b) Water quantity, c) Water quality.



**Figure A3.4.** Distribution of aspect Duration of activity for individual metrics. a) Geomorphology metrics, b) Water quantity, c) Water quality.

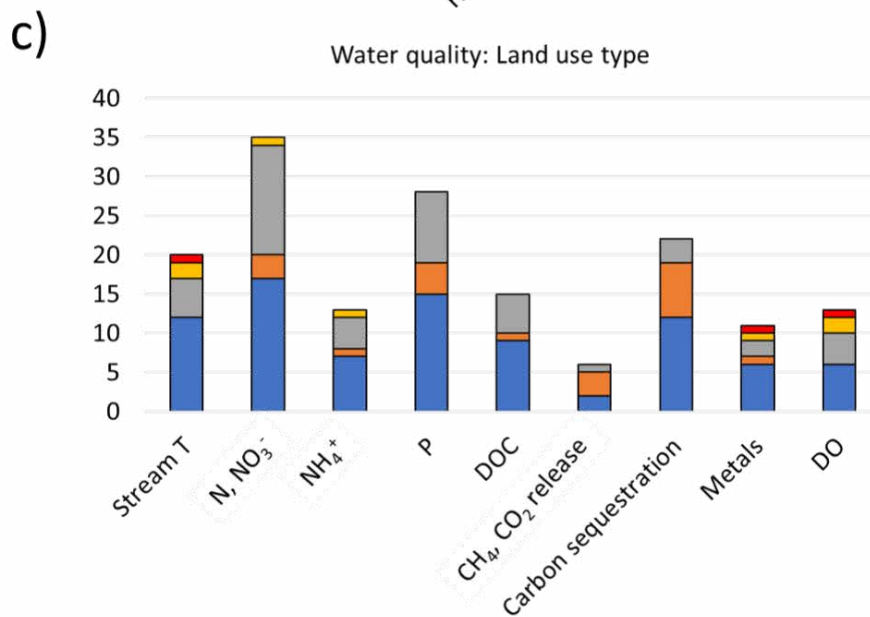
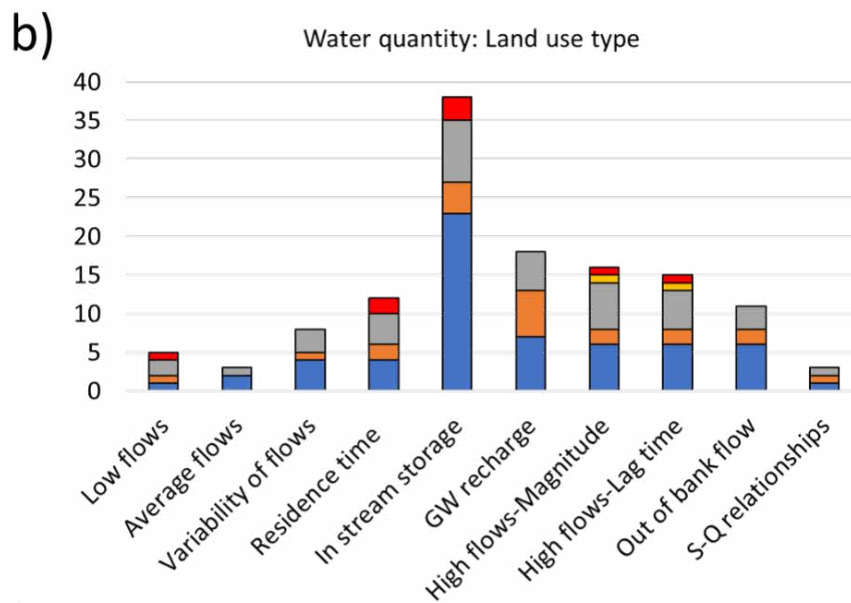
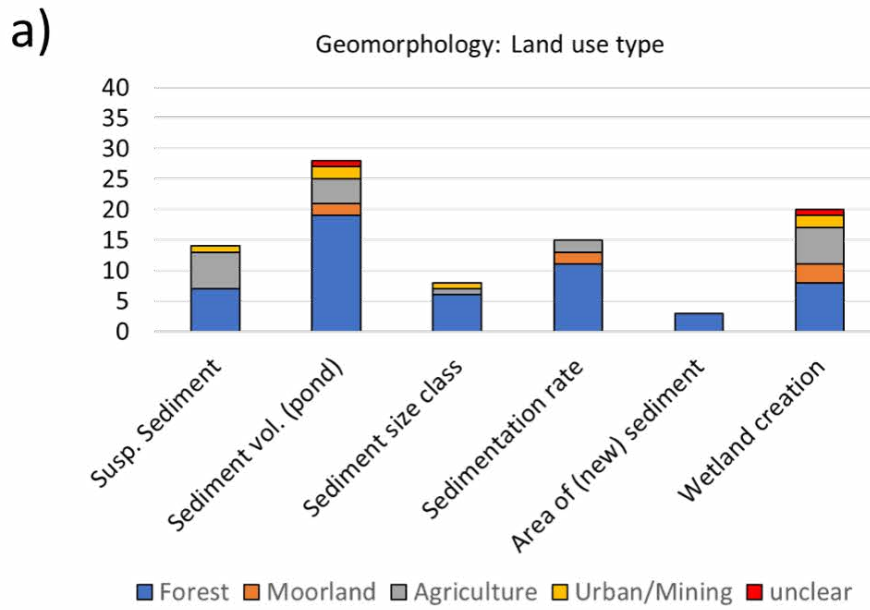


Figure A3.5. Distribution of aspect Land use type for individual metrics. a) Geomorphology metrics, b) Water quantity, c) Water quality.

## Appendix 4: Overview of the effects of beaver activity on geomorphology, water quantity, water quality in Scotland

This section provides a short overview of the knowledge collected in Scotland on the effects of beaver activity on physical processes. Table A4.1 provides a summary of the key effects, site-specifications and monitoring. This information is also included in relevant results sections within the main report.

To date, there are three beaver populations in Scotland: Knapdale, Tayside and Beaully (Table A4.1). In Knapdale, Argyll, the reintroduction has been carefully managed and scientifically monitored (Willby *et al.*, 2014). There, a small number of families thrives in a coniferous woodland, in several lochs. In Beaully, Highlands, a small population of beavers is dispersing along the River Beaully and the River Glass. This population is subject to early monitoring, that is mostly not yet available. Tree and Mayo (*Pers. Communication*) provided an estimated three times multiplication of the wetted area in the beaver activity area between 2020 and 2021 (Figure A4.1). Tayside hosts the largest beaver population in Scotland, which has been monitored. Tayside is known for its prime agricultural land and popular game fishing area (River Tay) (Gaywood *et al.*, 2015; Coz and Young 2020). The effects of reintroduced beavers in Scotland on ecology and biodiversity have been reported elsewhere (Willby *et al.*, 2014; Gaywood *et al.*, 2015; Campbell-Palmer *et al.*, 2018).

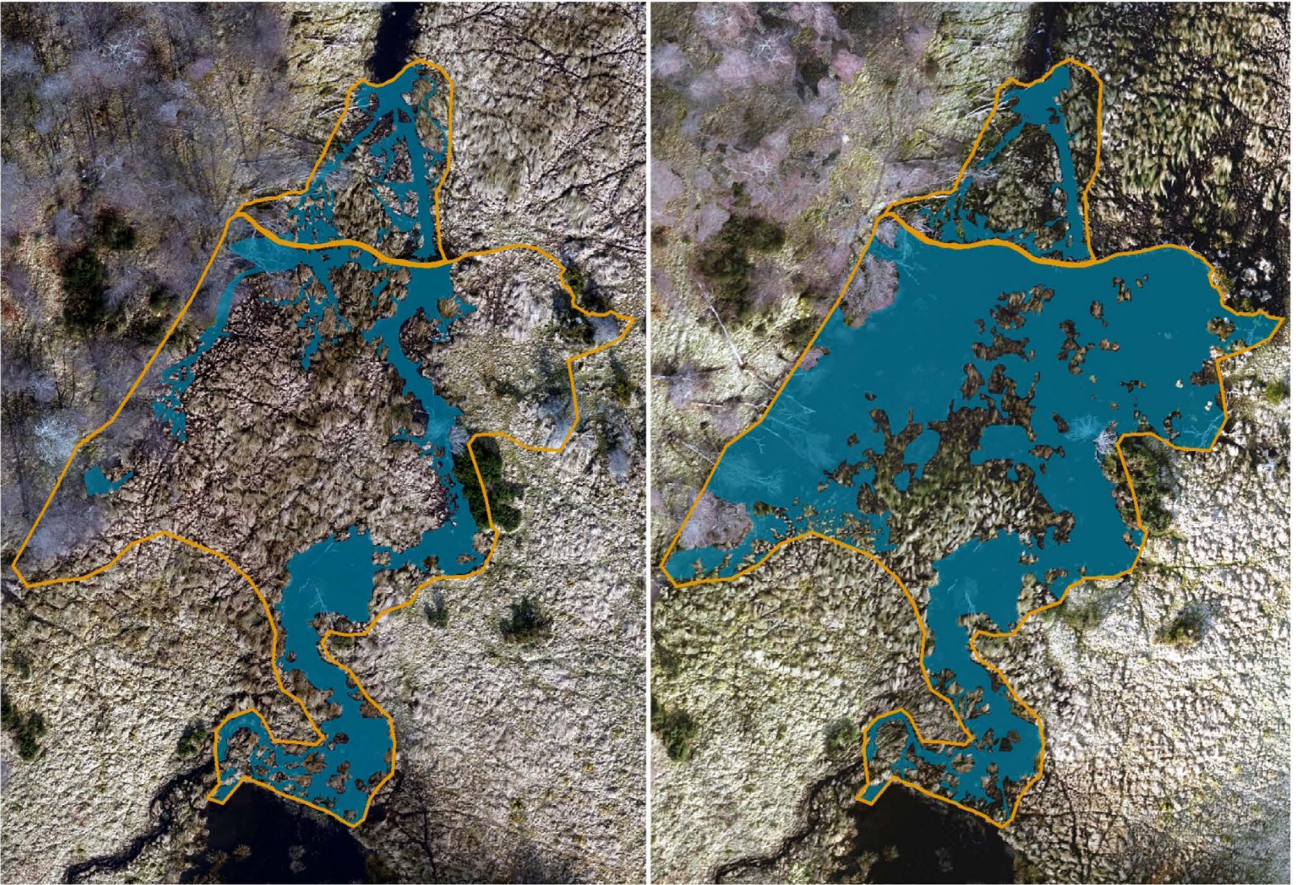
In the Scottish beaver trial in Knapdale, beavers have mainly dammed the outlets of lochs. The damming has increased water levels in some of the lochs. For instance, Dubh Loch experienced a marked and sustained water level rise due to dam building (increase of 1 m and inundating additional 1.41 ha). In terms of water quality, some changes in phosphorus, and increase in DOC, have been observed, but evidence is insufficient to conclude it is due to the beaver activity.

At Tayside, the effect of beaver dam sequences on hydrology and geomorphology has been studied by Law *et al.*, (2016) at the ~0.1 km<sup>2</sup> scale and ongoing work by van Biervliet *et al.*, includes both monitoring and modelling at the ~1 km<sup>2</sup> scale. Both studies involve the same site in the vicinity of Blairgowrie, Perthshire. Law *et al.*, (2016) reported a decrease in high flows magnitude and increase in lag time, while the streamflow data, presented in the study, shows that low flows are sustained higher than at a reference site. In terms of water quality, a reduction of 43% in nitrates and of 49% of phosphorus was measured downstream of a sequence of beaver dams. Colour, used as proxy for DOC, increased by 50% downstream of the beaver dam sequence. Additionally, suspended solids increased by 5.8 times. This was attributed to the fact that the landscape was heavily degraded. The study by Law *et al.*, (2016) also showed that only after 9 years of beaver activity, part of the agricultural land was transformed into a species-rich wetland. In the ongoing study by van Biervliet *et al.*, (In Prep.), preliminary analyses of streamflow data suggest that beaver dams affect discharges across most of the stream hydrograph, notably increasing the lowest 2% of flows. Additionally, beaver pond water levels at the site are remarkably stable between the lowest 5% and highest 10% of stream flows, showing the potential of sustained in-stream storage due to beaver dam building. The increase of low flows and storage due to beaver activity are deemed desirable effects, given the potential impacts of the anticipated climate change projections for longer and drier summers in agricultural Scotland (Kirkpatrick *et al.*, 2021).



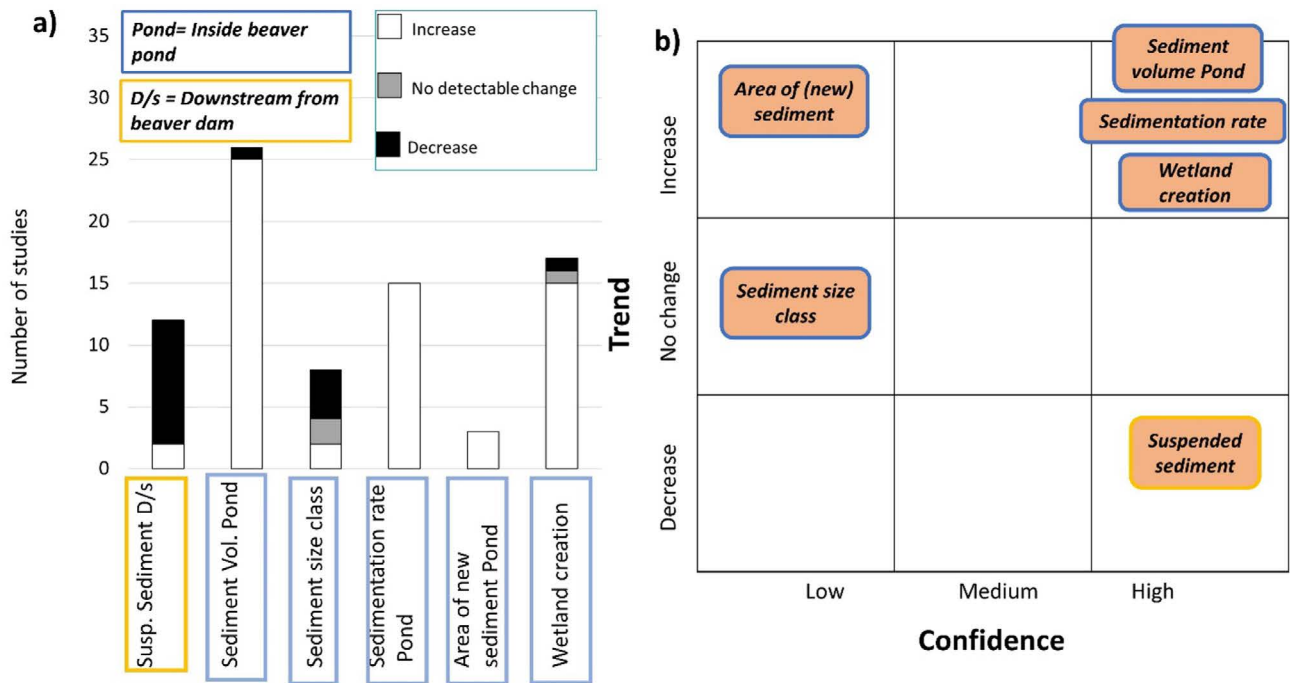
**Table A4.1. Summary of the knowledge concerning quantifiable evidence on the effects of beavers on hydrology and geomorphology (information extracted from: van Biervliet et al.; Willby et al., 2014; Gaywood et al., 2015; Law et al., 2016; Coz and Young 2020, and on Scottish river types, from Perfect et al., 2013).**

Site	Knapdale, Argyll,- Scottish Beaver Trial	Tayside, Perthshire	Beaul/Strathglass, Inverness
Land use	Coniferous woodland	Agriculture and forestry	Woodland, variety of land uses
Landscape characteristics & monitoring	Multiple lochs	Tay, Earn and Forth catchments	River Glass and River Beaul
	Semi-natural area	Productive agriculture and forestry	Semi-natural area
	Scientific monitoring since reintroduction	Of interest for fishing Late monitoring	Of interest for fishing No monitoring
Socioeconomic context	Mostly single ownership	Multiple landowners Area of high economic interest, potential conflicts with landowners	Multiple landowners Area of touristic interest, potential conflicts with landowners
Upstream drainage area studied	0.1 km <sup>2</sup> scale (0.04 km <sup>2</sup> -0.33 km <sup>2</sup> , 16 sites)	0.1 km <sup>2</sup> and 1 km <sup>2</sup> scale (0.13 km <sup>2</sup> and 2.2 km <sup>2</sup> )	No info
Beavers since	Since 2009	Since 2002-2005	No info
Quantifiable evidence	Willby et al., (2014)	van Biervliet et al., In prep.; Law et al., (2016)	Angus Tree and Carmen Mayo, NtaureScot, Personal Communication, 2021
Key findings		At 0.1 km <sup>2</sup> scale Attenuation of high flows Decrease of 43% in nitrogen downstream Decrease of 49% in P downstream Increase in DOC of 50% downstream	
	At 0.1 km <sup>2</sup> scale Increased and sustained water levels in some lochs	Increase in suspended sediments of 5.8 times Wetland with high biodiversity created and maintained by the beavers	Increase in wetted area from 589 m <sup>2</sup> in 2020 to an estimated 1,558 m <sup>2</sup> in 2021 (see Figure A4.1)
	Minor changes in DOC and Phosphorus, but insufficient evidence to attribute to beaver activity	At 1 km <sup>2</sup> scale Beaver dams impact discharges across most of the stream hydrograph, notably including increasing the lowest 2% of flows. Beaver pond water levels at the site are remarkably stable between the lowest 5% and highest 10% of stream flows	
Suggestions for monitoring		Water temperatures: pond, upstream and downstream (relevant for salmonids) Effects on local geomorphology Greenhouse gas sequestration and release (relevant to payment for ecosystem services)	Water temperatures: pond, upstream and downstream Greenhouse gas sequestration and release Effects on local geomorphology
		Continue and expand streamflow monitoring Soil moisture and near-surface water storage (relevant to crop growth and storage-discharge relationships)	Streamflow monitoring Water quality monitoring (DO, DOC, nutrients, suspended sediment)
		Changes in lateral and longitudinal connectivity (important for fish passage)	Changes in lateral and longitudinal connectivity (important for fish passage)
Water management challenges in the type of stream		Flooding Embankments Riverbank erosion Sediment pollution	Sediment pollution (result of muir burning track construction and wind farm development in peat dominated catchments) Peat conservation Channel narrowing and incision (due to channel engineering, dredging and realignment often carried out further downstream)

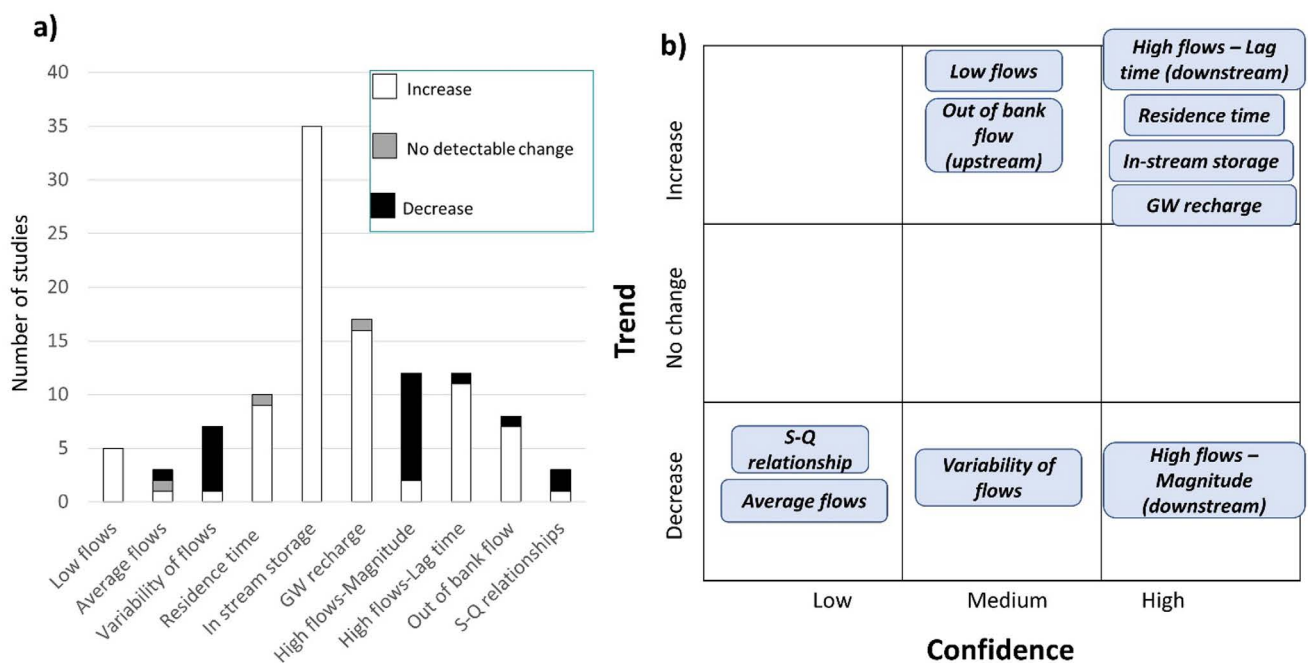


**Figure A4.1.** Beaver activity-initiated change in surface water area (blue shading) at a site in Scotland (scale 1:750, © NatureScot). The wetted area highlighted in the left-hand diagram was estimated to be 589 m<sup>2</sup> in 2020; that in the right-hand diagram was estimated to be 1,558 m<sup>2</sup> in 2021. The change is attributed to the enlargement of a dam - one of several on the same headwater stream - resulting in the growth of the beaver pond retained by it.

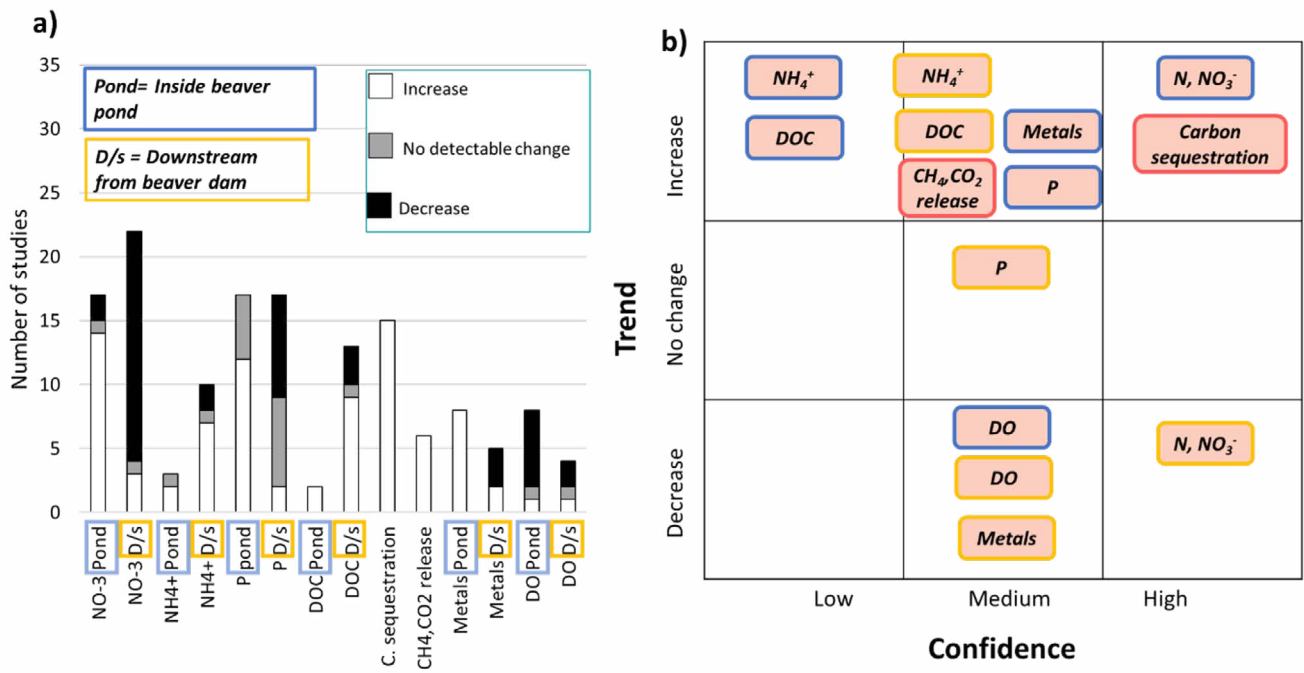
# Appendix 5: Establishing levels of confidence in trend



**Figure A5.1.** Overview of trends in change in geomorphology metrics due to beaver activity. Panel a) Number of studies reporting quantifiable change in water quantity metrics, colour coded by trend; Panel b) Metrics grouped by trend of change and level of confidence.



**Figure A5.2.** Overview of trends in change in water quantity metrics due to beaver activity. Panel a) Number of studies reporting quantifiable change in water quantity metrics, colour coded by trend; Panel b) Metrics grouped by trend of change and level of confidence.



**Figure A5.3.** Overview of trends in change in water quality metrics due to beaver activity. Panel a) Number of studies reporting quantifiable change in water quantity metrics, colour coded by trend; Panel b) Metrics grouped by trend of change and level of confidence.



# Appendix 6: CREW Scottish Beaver Workshop

**CREW Scottish Beaver Workshop held on 16 June 2021, 1-4pm BST.**

We held a 3-hour virtual workshop to explore the project's preliminary findings and discuss knowledge gaps on the effect of beavers on relevant physical processes and ecosystem services. We invited experts from a range of organisations (several universities, project research team and steering group including: NatureScot and Scottish Water) and expertise backgrounds (hydrologists, ecologists, geomorphologists).

The workshop had three main sessions. First, the preliminary findings of the project were presented, emphasising the approach of evaluating ecosystem services provided by beaver activity (via quantifiable metrics) as well as evaluating the level of confidence of the existing evidence, in terms of trend and magnitude. This session was followed by two discussion blocks: the first one on Beaver impacts in relation to (ecosystem services in) the Scottish context, and the second one on addressing knowledge gaps and specifically with beaver dam analogues and modelling. Each block of these discussion blocks started with a presentation by an invited speaker, followed by group discussion using interactive, real-time voting (Mentimeter®) and sub-group discussions (breakout rooms). The two discussion blocks were followed by a final brief plenary discussion.

Below we highlight some of the main points of the discussions, followed by the workshop agenda and a list of attendees.

## **Comments following the research presentation**

- Dam structure (i.e., how leaky) and maturity (i.e., how maintained) are thought to be key factors in affecting physical processes related to water quantity, quality and geomorphology. It is difficult to infer this directly from individual studies in the literature. Instead, we tried to address this as much as possible by using proxies of these factors instead (e.g., structure age).
- Typically, in beaver dam systems, there might be one or two key dams, which exert the major impact on hydrological and geomorphological processes. This could affect the results of the studies reported.
- Most studies evaluate upstream versus downstream data to evaluate beaver activity impacts on e.g., hydrology. A suggestion was that this should be

complemented more with analyses of control sites.

## **Discussion session on beaver impacts in relation to ecosystem services in the Scottish context**

The first block started with a presentation by Dr Mark Wilkinson. He presented the Scottish context, its pressing water related issues and relevant ecosystem services and emphasised that the focus of the project and analyses and workshop discussion blocks had to be relevant to these. Through the group discussion, the most relevant issues and knowledge gaps for beaver impacts in relation to ecosystem services were identified.

### *Main themes in discussion*

- Better understanding of the effect of beaver activity along the full range of stream discharge relationships, including the associated uncertainties, is needed. Additionally, more precision in measurements and long-term monitoring are key to improve understanding.
- The effect of beaver activity in moorland environments, important in Scotland, is less well understood, given the bias in the literature towards in-stream beavers.
- Maintaining ecological flows, flood risk management and increase/secure water supply at scales up to 10 km<sup>2</sup> were rated by experts as among the most relevant ecosystem services provided/maintained by beaver activity, but also those least well understood. In addition to the impact of beaver activity on physical processes, more research/investigation is needed on the socioeconomical aspects and the cost-benefit trade-off for different groups of society. For example, the well-known effect of local water table rise related to beaver dam building may not be a desirable outcome for every landowner.
- In intense agricultural environments (as e.g., in England or NE, E Scotland) beaver activity can create and maintain the river corridor buffer zones, which present multiple benefits in terms of water quantity regulation and water quality improvement.
- Planning and management of beavers needs to be informed by report/work like the present, in order to assess whether pushing relocation to a certain environment is desirable and beaver activity can be used as a tool in river restoration/ecosystem services restoration.

## **Discussion session on addressing knowledge gaps with beaver dam analogues and modelling**

This second discussion block started with a presentation by Prof. Cherie Westbrook on the similarities and differences



between beaver dams and beaver dam analogues, in terms of functionalities and provision of ecosystem services. The group discussion helped elucidate the role of beaver dam analogues and modelling in addressing key knowledge gaps.

#### *Main themes in discussion*

- Beaver dam analogues (BDAs) do not fully mimic the functioning of beaver dams and therefore cannot provide the full range of ecosystem services provided by beaver activity according to experts.
- BDAs appear to be more useful for providing ecosystem services in very degraded environments which cannot support beavers. There is high cost of maintenance associated with BDA structures.
- The amount of knowledge/evidence on BDAs is typically less than on beaver activity; because of this and the fact they do not fully mimic beaver activity, it was considered not possible to use knowledge of BDA impacts to address knowledge gaps on beaver activity impacts.
- BDAs were rated somewhat useful for addressing lateral connectivity and wetland creation, regulating flow and regulating out of bank flooding. They were considered much less effective in terms of carbon sequestration, regulating stream temperature and nutrient cycling.
- Modelling the effect of beavers on physical processes (e.g., storage-discharge relationships) using conceptual models is challenging/complex and data-driven approaches are the most informative. In that sense, long-term monitoring is important, in order to be able to calibrate and validate the models.
- Hydraulic modelling of beaver dam functioning is challenging as it requires a 3-D approach, and to mimic effectively the functioning of a beaver dam in the field, sophisticated engineering knowledge is needed.
- Modelling habitat probability is useful in order to understand where beaver might be able to establish within a landscape.
- Modelling was rated by the expert group as somewhat useful for widening boundaries of knowledge (e.g., in different land use or climate scenarios) and upscaling knowledge on effect of beaver activity but much less for other purposes.
- Overall, scaling the impacts of beaver activity is still the most fundamental question that needs to be addressed. At what scale can beavers be considered relevant and when not?

#### AGENDA

*13.00-13.20 Welcome and Introductions (Josie Geris and Martin Gaywood)*

*13.20-13.55 Research Presentation (Katya Dimitrova-Petrova and Josie Geris)*

*13.55-14.05 Screen Break*

*14.05-14.50 Discussion Block 1: Effects of beaver activity in the Scottish context*

*- Introduction by Dr. Mark Wilkinson*

*- Identification of knowledge gaps*

*- Ecosystem Services*

*14.50-15.00 Screen Break*

*15.00-15.45 Discussion Block 2: Addressing gaps with beaver dam analogues & modelling*

*- Introduction Presentation by Prof Cherie Westbrook*

*- Value of beaver dam analogues*

*- Value of modelling*

*15.45-16.00 Wrap up discussions and closing*

#### Attendees

*- Stephen Addy, The James Hutton Institute, Aberdeen*

*- Sophie Beier, CREW (Scotland's Centre of Expertise for Waters)*

*- Doreen Bell, Scottish Water*

*- Richard Brazier, University of Exeter*

*- Lauren Dixon, Scottish Water*

*- Katya Dimitrova Petrova, University of Aberdeen*

*- Martin Gaywood, NatureScot*

*- Josie Geris, University of Aberdeen*

*- Angela Gurnell, Queen Mary University of London*

*- Annegret Larsen, University of Wageningen*

*- Joshua Larsen, University of Birmingham*

*- Alan Law, University of Stirling*

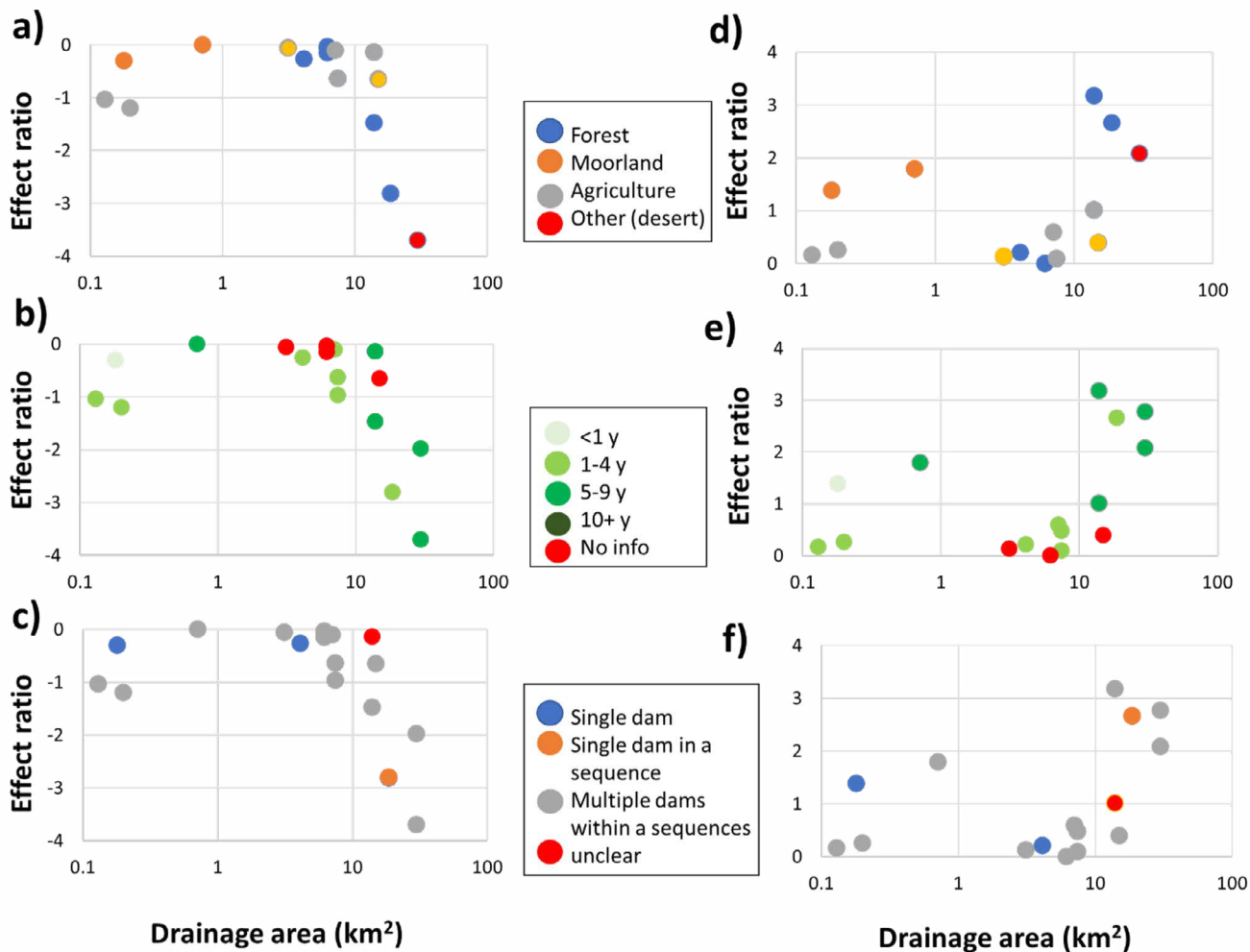
*- Alan Puttock, University of Exeter*

*- Angus Tree, NatureScot*

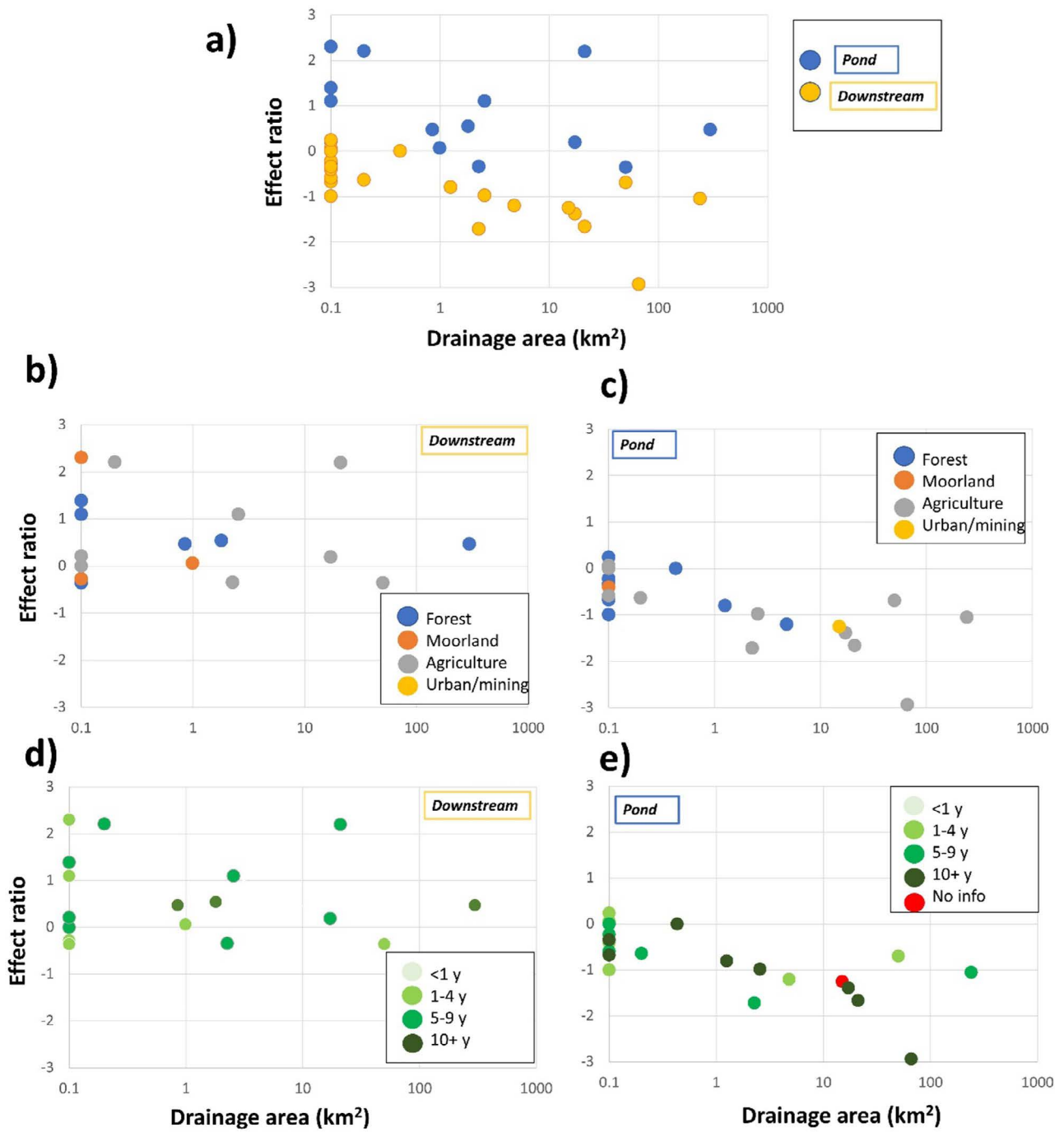
*- Cherie Westbrook, University of Saskatchewan*

*- Mark Wilkinson, The James Hutton Institute, Aberdeen*

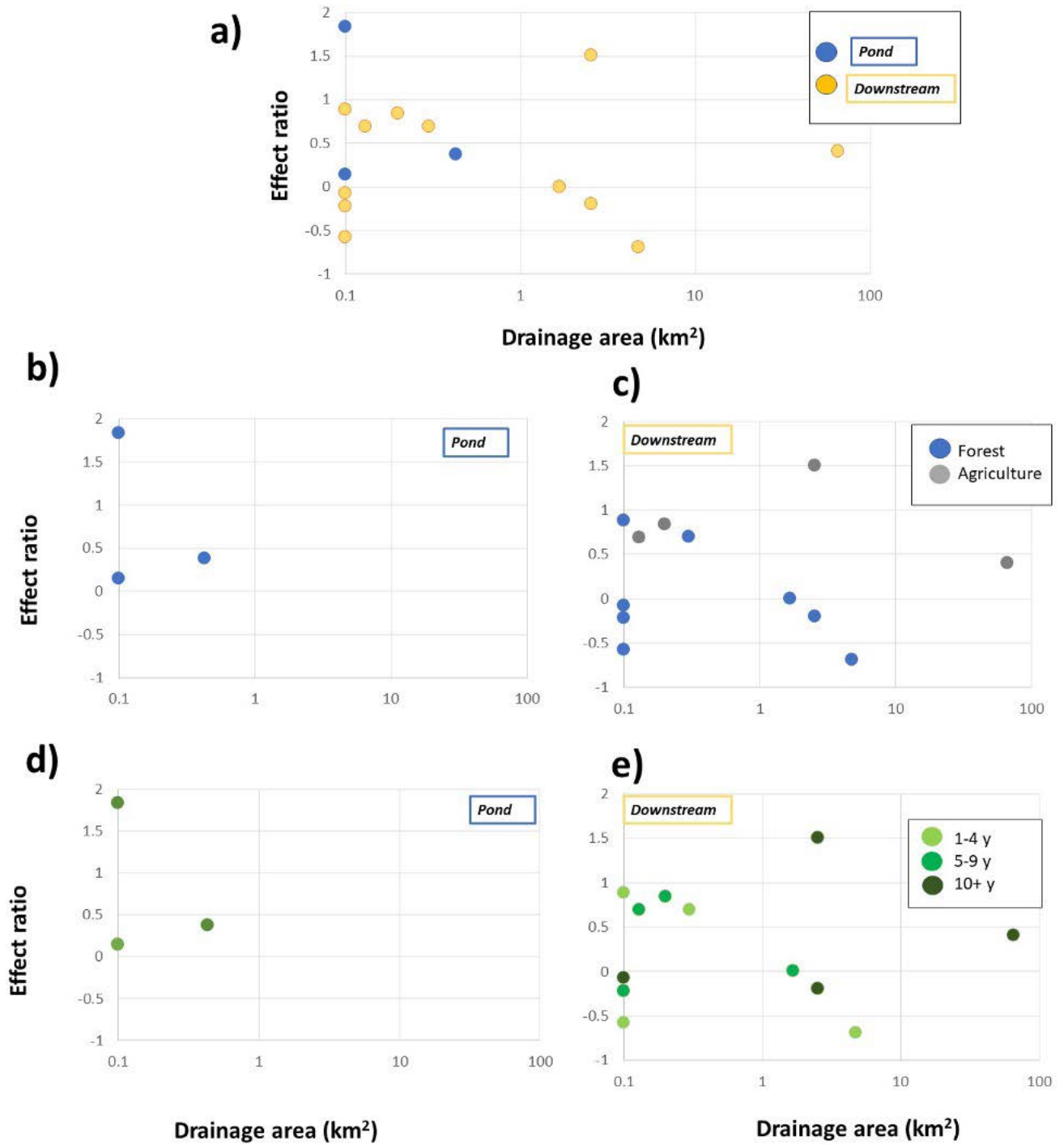
# Appendix 7: Magnitude of change for selected metrics



**Figure A7.1.** Effect ratios of change in magnitude and lag time of high flows with increasing spatial scale. Decrease in high flows magnitude in environments with different land use types a) with duration of activity b) and extent of activity c) Increase in high flows lag time in different environment types d), with duration of activity e) and extent of activity f).



**Figure A7.2.** Effect ratio of change inside pond and downstream from pond due to beaver activity. a) Overview of effect ratios for N, NO<sub>3</sub>- b) and d) Effect ratio downstream depending on environment type and age of activity respectively; c) and e) Effect ratio inside the pond depending on environment type and duration of activity respectively.



**Figure A7.3.** Effect ratio of change inside pond and downstream from pond due to beaver activity. a) Overview of effect ratios for DOC, b) and d) Effect ratio downstream depending on environment type and age of activity respectively; c) and e) Effect ratio inside the pond depending on environment type and duration of activity respectively.

# CREW CENTRE OF EXPERTISE FOR WATERS

CREW Facilitation Team

Hydro Nation International Centre

James Hutton Institute

Craigiebuckler

Aberdeen AB15 8QH

Scotland UK

Tel: +44 (0)1224 395 395

Email: [enquiries@crew.ac.uk](mailto:enquiries@crew.ac.uk)

[www.crew.ac.uk](http://www.crew.ac.uk)



CREW is a partnership between the James Hutton Institute and all Scottish Higher Education Institutes and Research Institutes. The Centre is funded by the Scottish Government.

